



# NBPME Reports

## The National Board of Podiatric Medical Examiners Newsletter



### Remembering Ken E. Burke, Ph.D.

After eleven years as a public member of the Council on Podiatric Medical Education Dr. Burke continued his volunteer efforts for the benefit of the podiatric medical profession by joining the National Board of Podiatric Medical Examiners (NBPME) in 2005. He served as Chair of the Nominating Committee and as a member of the Succession Committee. NBPME benefited by Ken's academic experience, his problem solving skills and his contributions to the strategic planning process. His untimely death before the end of his first three-year term on the Board robbed all of us of a true gentleman and a committed advocate for the profession of podiatric medicine.

### Tribute

Zach Ritter's term on the Board representing APMSA ended with the August, 2008 meeting. Zach was instrumental in establishing the excellent working relationship between NBPME and APMSA. His contributions to discussions of issues at board meetings has been unparalleled. We will miss his insight.

### Elections

At the annual meeting of NBPME on August 16<sup>th</sup> the following members were elected:

#### Officers

President - Jeffrey S. Gerland, D.P.M.  
 Vice President - Stephen F. Stern, D.P.M.  
 Treasurer - Mindy Benton, D.P.M.

#### Board Members

Podiatric Physician - Russell S. Sticha, D.P.M.  
 Residency Director - Charles M. Lombardi, D.P.M.  
 State Board Member - Wayne R. Axman, D.P.M.

#### Table of Contents

	<i>Page</i>		<i>Page</i>
Remembering Ken E. Burke, Ph.D.	1	By-laws Changes	2
Tribute	1	Part I July, 2008 Examination	2 & 3
Elections	1	NBPME 2008-09 Budget	3
New Test Sequence Policy	2	Biometrics: The Future of Test Security	4
Call Center	2	NBPME Seeks Nominations	4

**New Test Sequence Policy**

The NBPME will, beginning on January 1, 2010, NOT allow any podiatric medical student or candidate to take Part II unless he or she has taken and successfully completed (with a passing score) Part I. Likewise, we will NOT allow any candidate to take Part III unless he/she has successfully completed and passed Part I and II. We will mandate that the tests be taken sequentially and passed before the candidate continues on to the next part. The goal of this new policy is to require students to demonstrate mastery of basic knowledge before advancing into clinical knowledge and skills assessment, since each test part assumes that prior knowledge has been achieved.

**Call Center**

Prometric has opened a 'call center' effective July, 2008. The net effect of this will be to insure that all calls from podiatric medical students get answered by a 'live' person. We have found that one of the largest issues the students have is that they often had to leave a message on an answering machine and then had to wait for a call back. Now when someone calls during normal business hours a trained operator will assist the candidate. If call is after hours, they will be instructed to call back during normal business hours and will be unable to leave a message. All live calls will be logged in.

**By-laws Changes**

- A. A Dean will join the Board as a liaison member.
- B. A member of the Council of Teaching Hospitals will be elected to a board position.
- C. Three board members representing State Boards was reduced to two.
- D. A transition timetable will be established to provide the change to the new membership without effecting current board membership.

**Part I July, 2008 Examination**

## Test Statistics (First-Time Candidates)

Total (First-Time) Candidates	522
Scaled Score Mean	79.13
Scaled Score Standard Deviation	5.06
Scaled Minimum Score Obtained	63
Scaled Maximum Score Obtained	90

## Candidate Performance (First-Time Candidates)

Pass	425	81.4%
Fail	97	18.6%

**Part I July, 2008 Examination (continued)**

## Diagnostic Information by Subscore (First-Time Candidates)

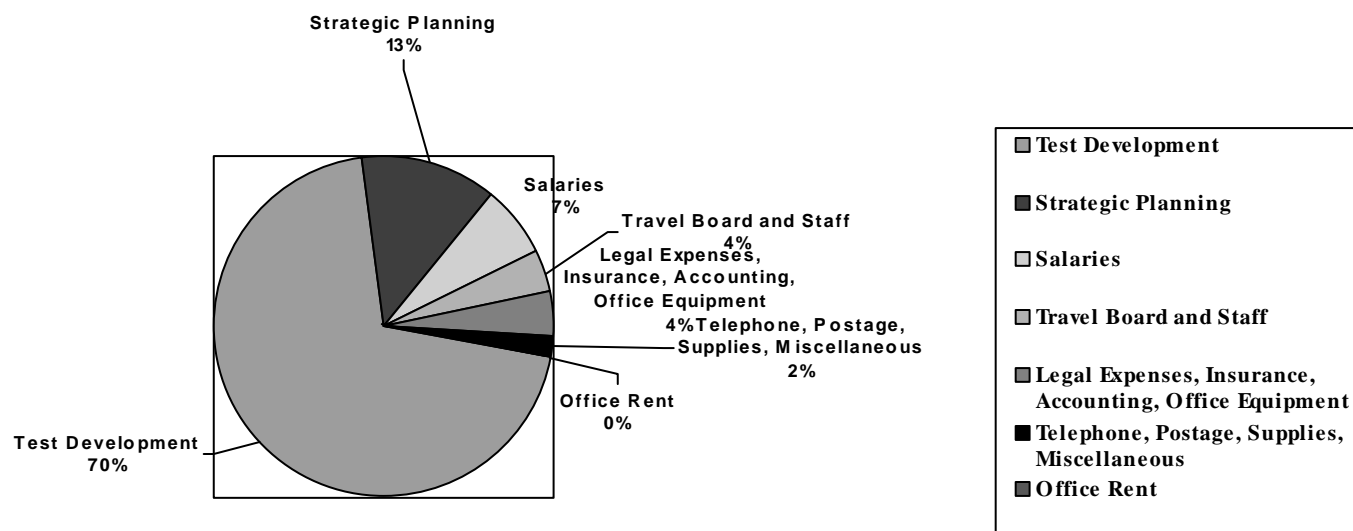
Scaled Score	DIAGNOSTIC SCALED SUBSCORE INFORMATION													
	General Anatomy		Lower Extremity Anatomy		Biochemistry		Physiology		Medical Microbiology And Immunology		Pathology		Pharmacology	
	N	%	N	%	N	%	N	%	N	%	N	%	N	%
1	91	17.4	103	19.7	142	27.2	118	22.6	104	19.9	105	20.1	139	26.6
2	431	82.6	419	80.3	380	72.8	404	77.4	418	80.1	417	79.9	383	73.4
% of Test	10		20		10		15		15		15		15	
Mean	1.83		1.80		1.73		1.77		1.80		1.80		1.73	
Std. Dev.	0.38		0.40		0.45		0.42		0.40		0.40		0.44	
Median	1.894		1.877		1.813		1.854		1.876		1.874		1.819	

Scaled Score 2. At or above the level of minimum competence.

1. Below the level of minimum competence.

**NBPME 2008-09 Budget**

- Income-100% from Examination fees for Part I, II, III
- Expenses-Test Development-70%, Strategic Planning-13%, Salaries-7%, Travel Board and Staff-4%, Legal Expenses, Insurance, Accounting, Office Equipment-4%, Telephone, Postage, Supplies, Miscellaneous-2% and Office Rent-0%



**Biometrics: The Future of Test Security**

Biometric systems are an advanced means of verifying a candidate's identity when he/she arrives at a test center to take an exam. Biometric measures vary by exam provider, but Prometric's biometric identity management system consists of a fingerprint reader, a device for reading the digital information on a driver's license, passport, or similar identification document, and a scanner for recording the human-readable information on the front of the driver's license or other authorized document. The fingerprint reader captures an image of a fingerprint that is used to monitor and control the movement of the candidate in and out of a test room. The fingerprint can also be compared electronically to a central database to ensure that a candidate did not test previously under a different name. This same system is also used to verify the identity of the test center administrators on duty and to monitor proctoring behavior during each day's testing activity. Students were given the option of participating with the system at the October Part I test administration.

**NBPME Seeks Nominations**

The following position on the Board will be open for election to three-year term at our Mid-Winter Meeting in March, 2009:

- Public Member.

Interested individuals should forward a letter and curriculum vitae no later than January 5, 2009 to:

NBPME  
P. O. Box  
Bellefonte, PA 16823

E-Mail: [NBPMEOfc@aol.com](mailto:NBPMEOfc@aol.com).

---

National Board of Podiatric Medical Examiners (Parts I, II & III-PMLexis)

P. O. Box 510  
Bellefonte, PA 16823  
Tel: (814) 357-0487  
Fax: (814) 357-0581